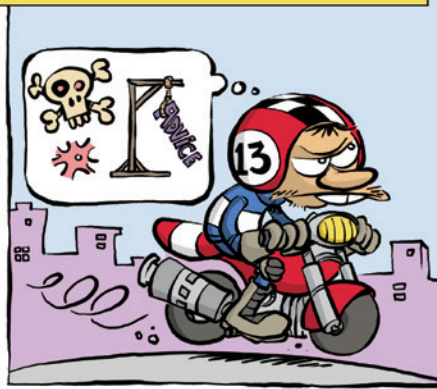




TODAY WE DEAL WITH CENTRAL ISLANDS. THEY'RE OFTEN USED AS PEDESTRIAN REFUGES TO MAKE CROSSING THE ROAD EASIER, TO GUIDE THE FLOWS OF TRAFFIC AT JUNCTIONS, OR TO REDUCE THE WIDTH OF THE ROAD IN ORDER TO SLOW DOWN TRAFFIC...



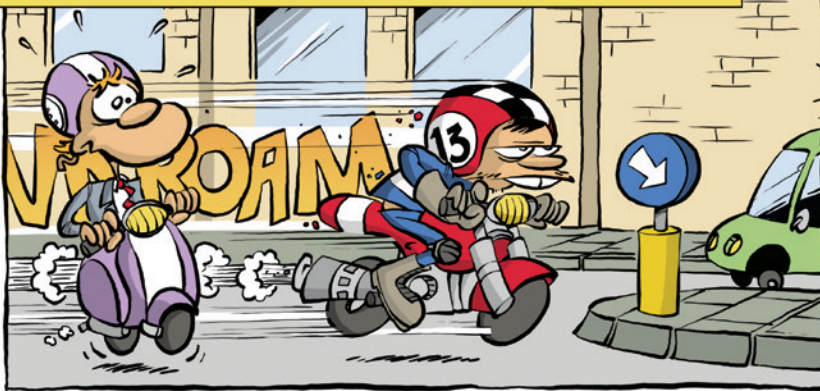
WHAT'S THE MATTER LUCKY 13? YOU LOOK LIKE YOU'RE PRETTY FED UP WITH ALL THIS ADVICE...



APPARENTLY SO...



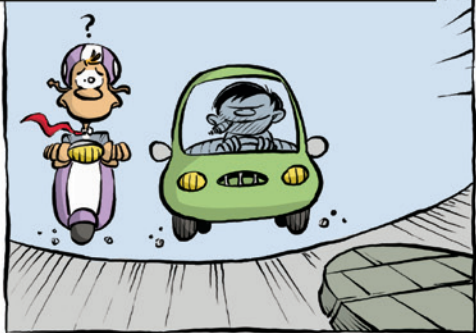
RIDERS OVERTAKING SLOWER VEHICLES, NEED TO BE PARTICULARLY AWARE OF THE RAISED CURB OF CENTRAL ISLANDS...



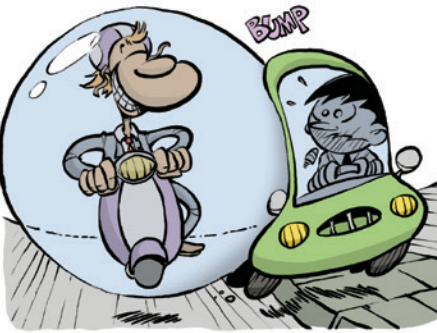
EVEN A LIGHT COLLISION WITH IT MAY CAUSE LOSS OF CONTROL OF YOUR MOTORCYCLE...



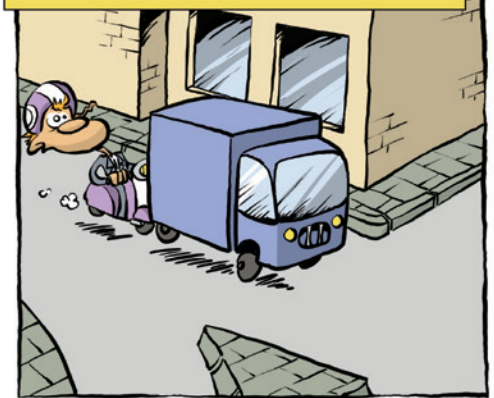
OK, WELL... MAYBE YOU WILL LISTEN: CAR DRIVERS OVERTAKING YOU MAY IGNORE THAT CENTRAL ISLANDS NARROW DOWN THE WIDTH OF A ROAD CONSIDERABLY WITH THE CONSEQUENCE OF GETTING DANGEROUSLY CLOSE TO YOU...



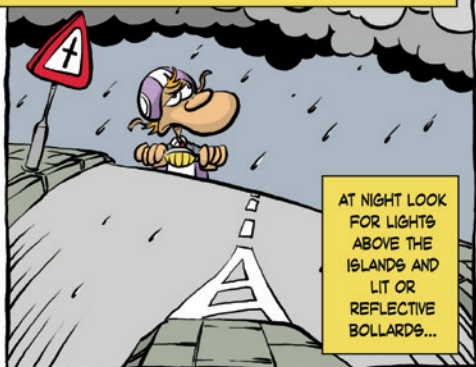
SO MAKE SURE YOU ARE CLEARLY VISIBLE AND ALWAYS KEEP A "SAFETY BUBBLE" AROUND YOU...



ALSO KEEP YOUR DISTANCE FROM OTHER VEHICLES. IT'S OFTEN DIFFICULT TO SPOT CENTRAL ISLANDS AHEAD...



FURTHERMORE, WATCH FOR JUNCTION SIGNS, WHITE LINES AND HATCHED MARKINGS AS THEY OFTEN WARN OF A CENTRAL ISLAND AHEAD...



AT NIGHT LOOK FOR LIGHTS ABOVE THE ISLANDS AND LIT OR REFLECTIVE BOLLARDS...

AND FINALLY... EH... BUT... WHERE... ?



OK, WELL... THAT'S ENOUGH ADVICE FOR TODAY... WE JUST HOPE THAT YOU GUYS REALLY GET WHAT CENTRAL ISLANDS ARE...

